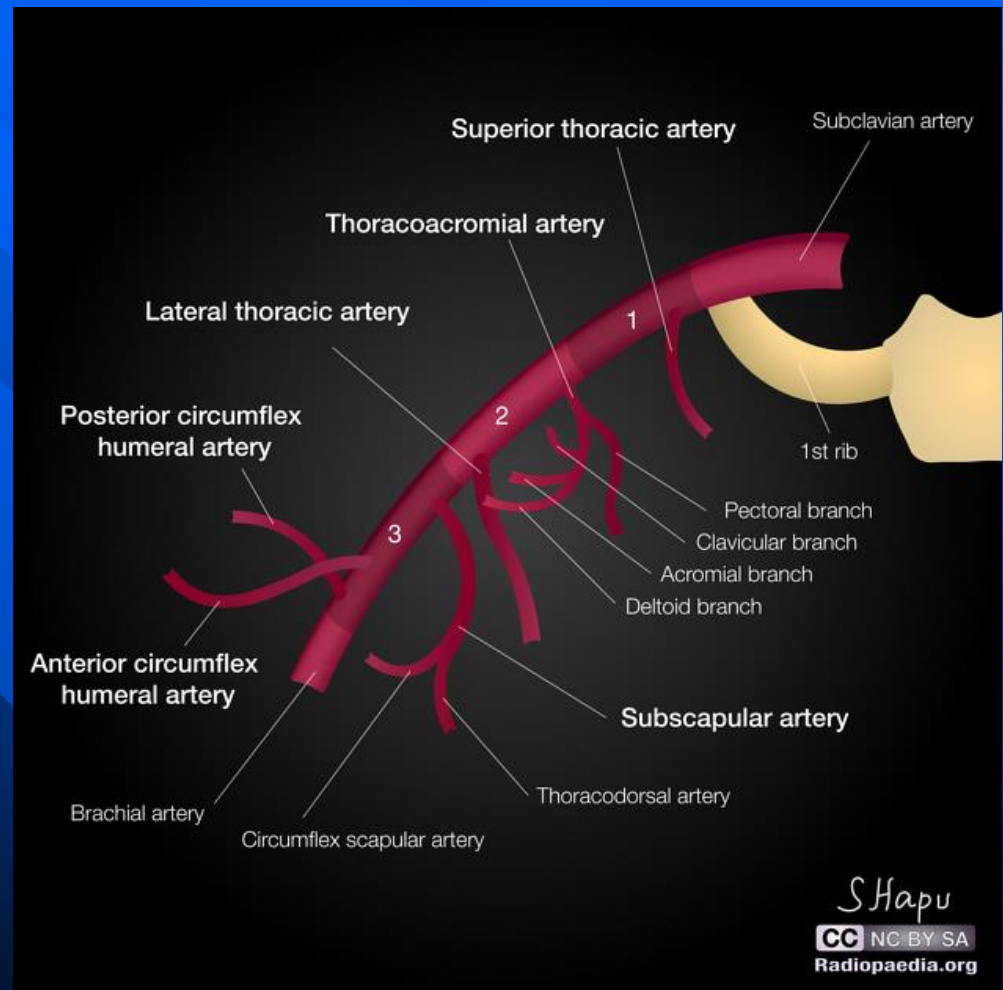


# Axillary Artery

- Origin: continuation of the subclavian artery as it passes **under the midpoint of the clavicle** on the outer edge of the first rib
- Termination: continues as the brachial artery at the lower border of teres major

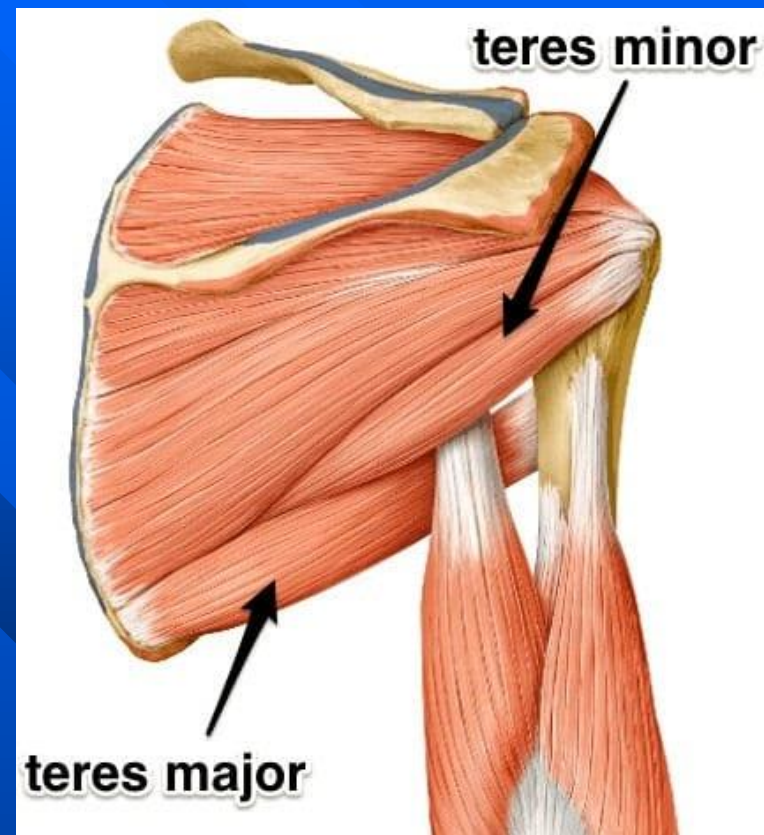
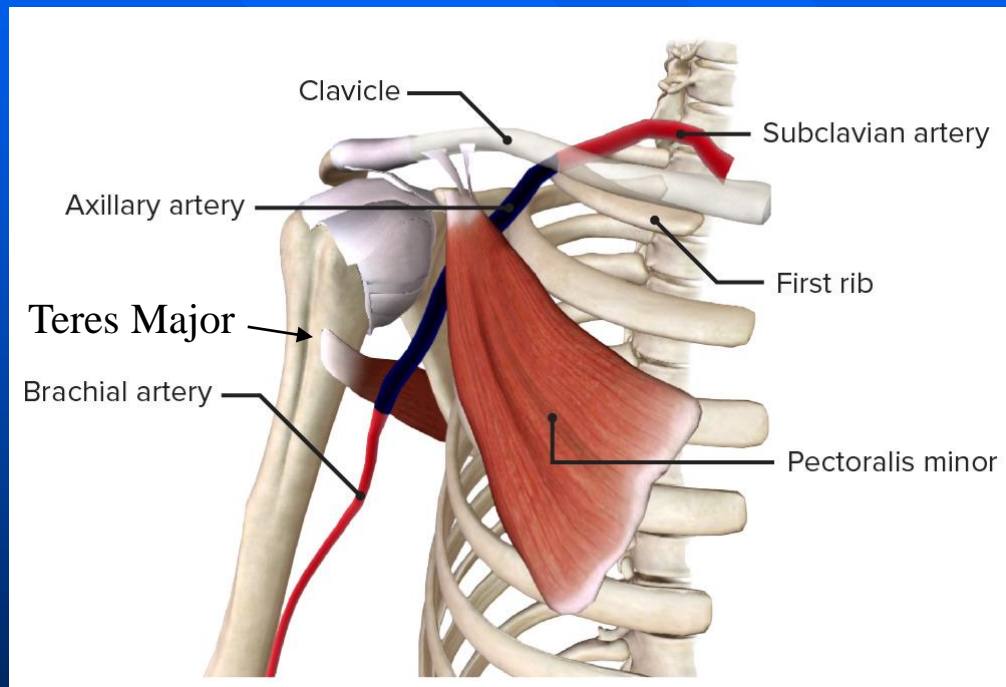
# 3 Parts

- Three parts by its relation to **pectoralis minor** muscle:
- 1st (suprapectoral) part:
  - from its origin at the lateral edge of the first rib to superior border of pectoralis minor
- 2nd (retropectoral) part:
  - posterior to pectoralis minor
- 3rd (infrapectoral) part:
  - from the inferior border of pectoralis minor to inferior border of teres major

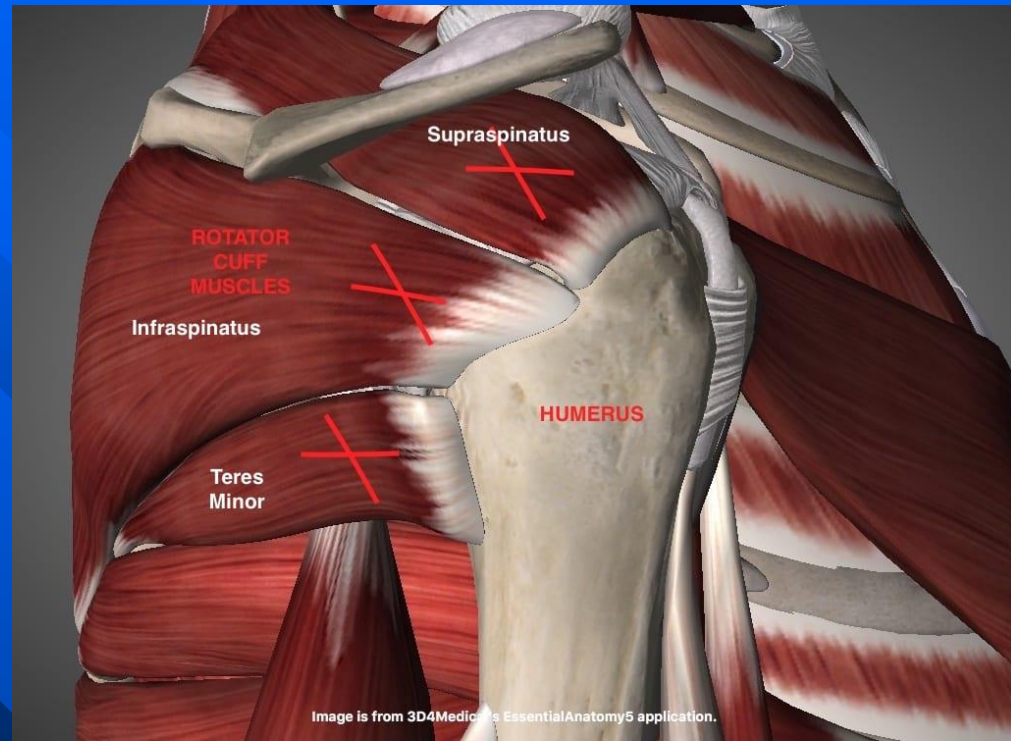
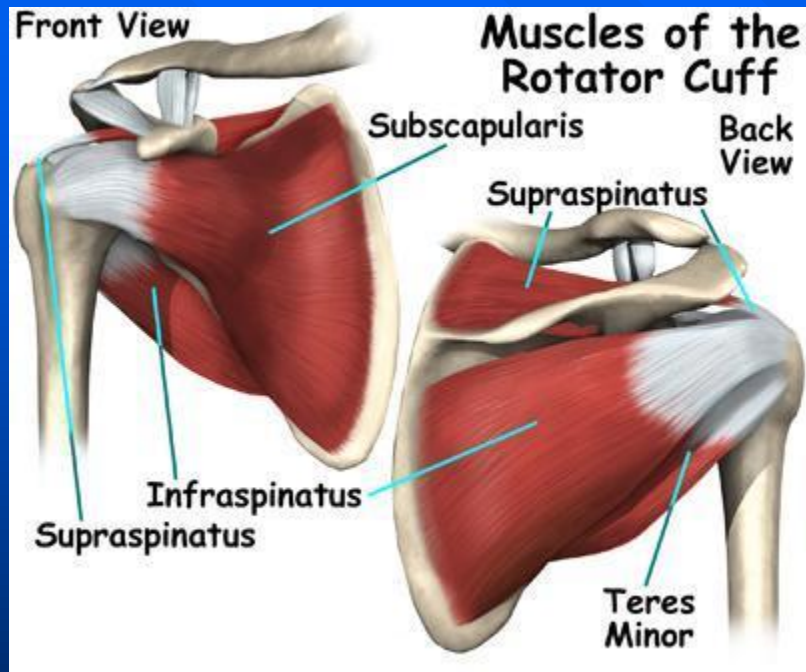


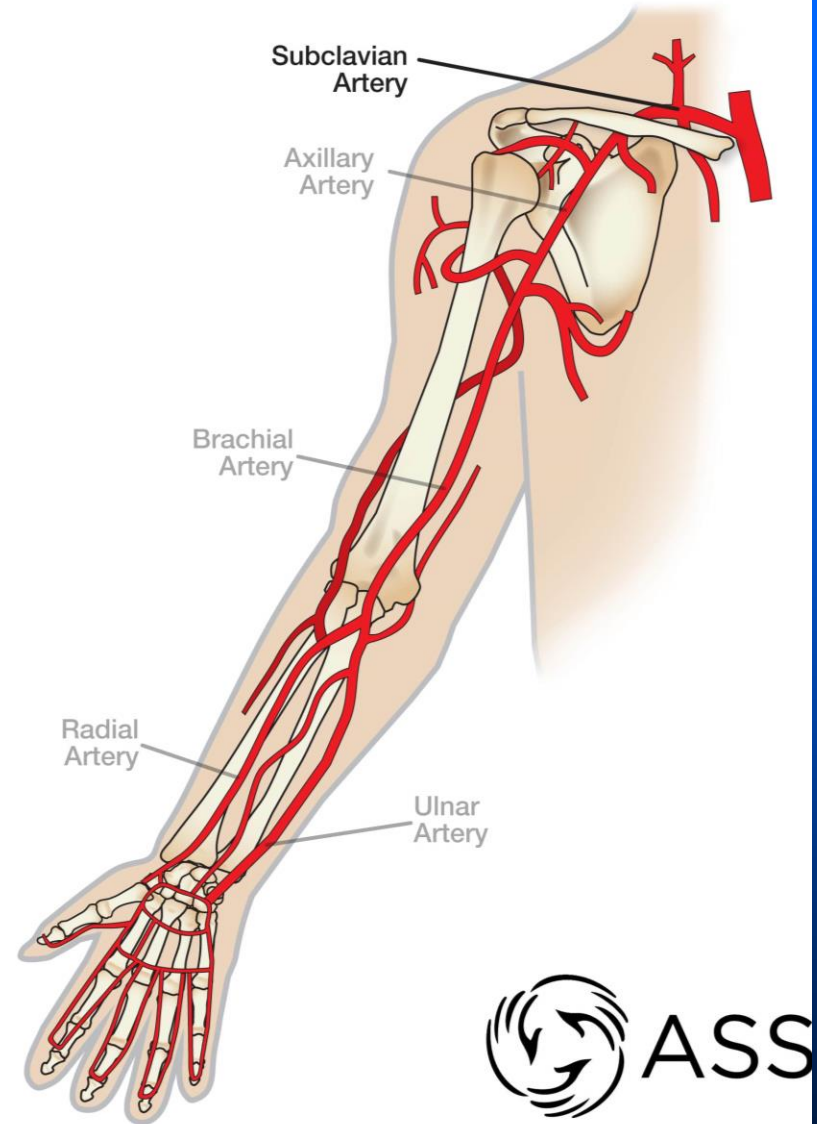
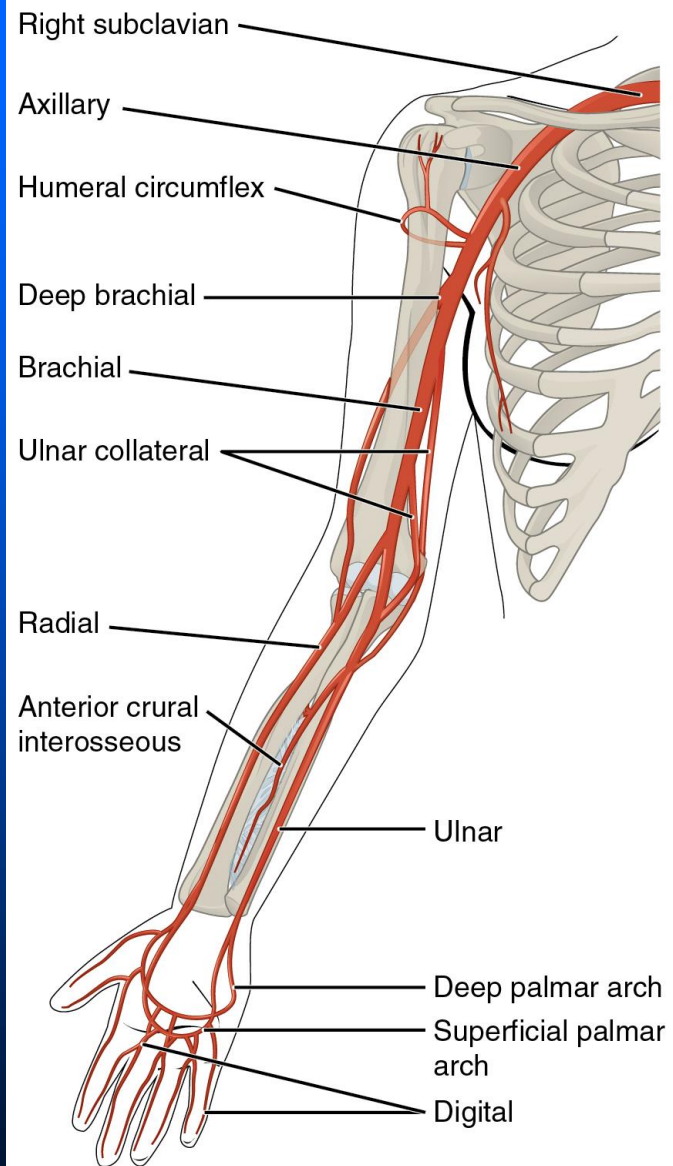
# Upper Arm arteries

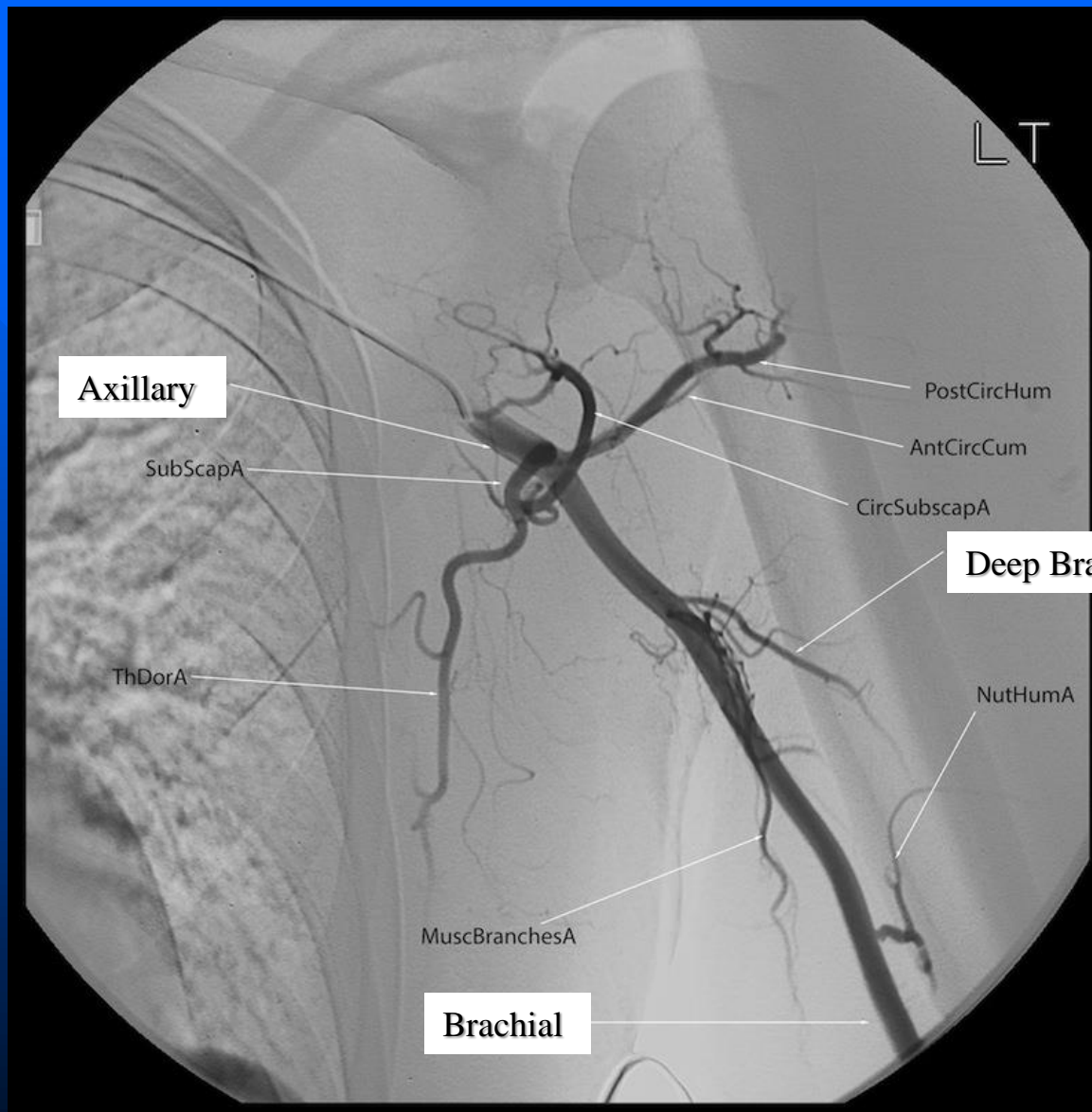
- **Axillary artery** turns into the **brachial artery** just below the axilla as it crosses the inferior border of the **teres major muscle**.
- The **brachial artery** is the continuation of the main arterial supply in the upper arm as it travels **medially towards the elbow**.
  - It gives off the deep brachial artery and collateral branches that supply the arterial anastomosis of the elbow before terminating distal to the elbow by **bifurcating into the radial artery and ulnar artery**.
- **Radial and ulnar arteries**
  - Extend along either side of the forearm to the wrist.
  - Proximally, they both give rise to recurrent arteries that ascend to complete the arterial anastomoses of the elbow.
  - Ulnar artery gives off an interosseous branch that trifurcates to form anterior, posterior and recurrent branches.
  - Distally, the ulnar artery continues as the superficial palmar arch, and the radial artery continues as the deep palmar arch.
  - Both give off branches that provide blood to the thumb and fingers

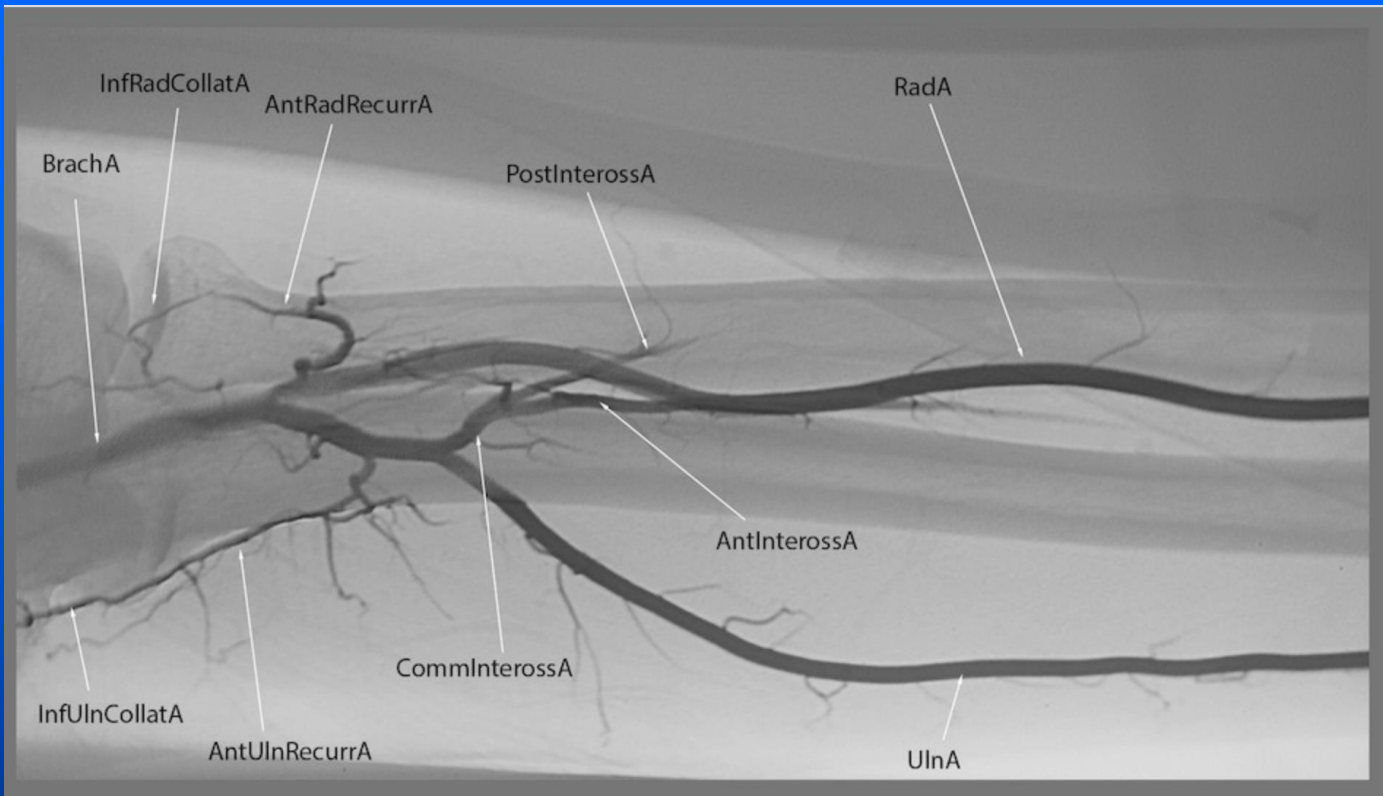






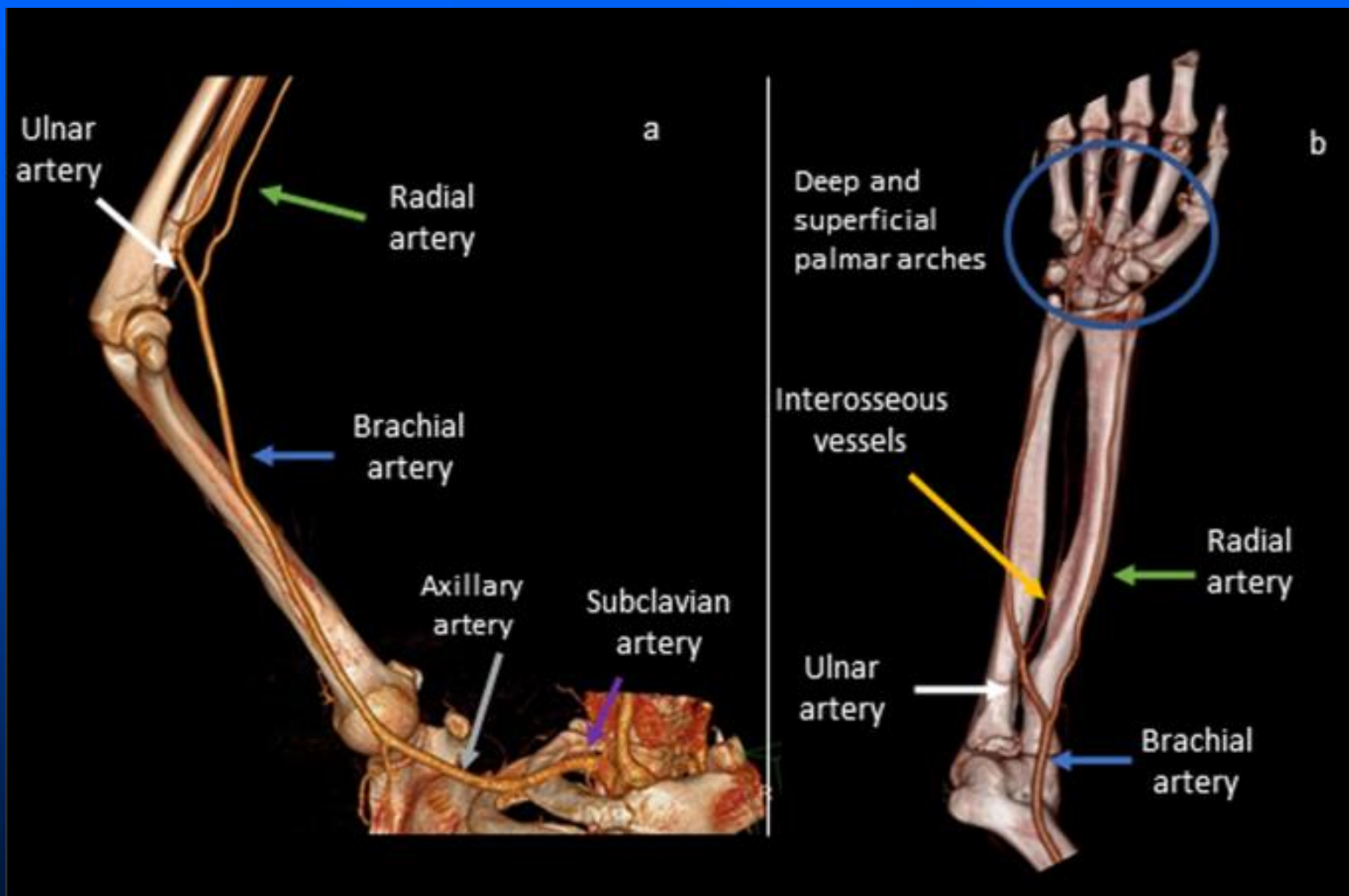


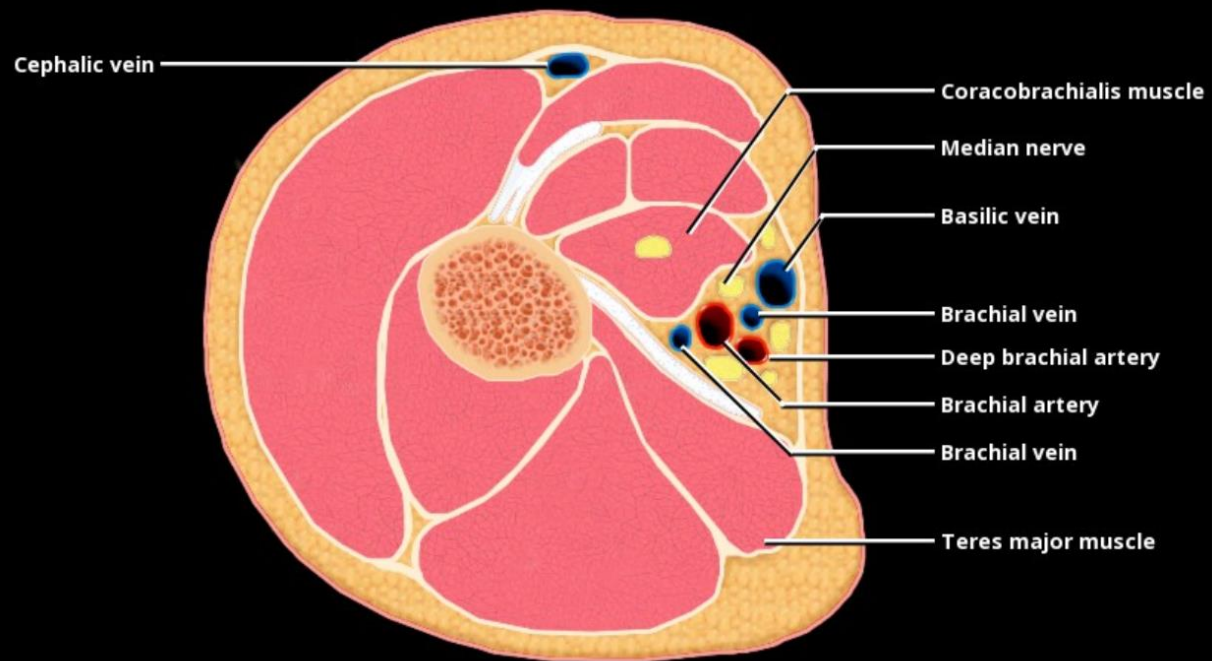




| abbreviation  | artery                    |
|---------------|---------------------------|
| BrachA        | brachial                  |
| InfRadCollatA | radial collateral         |
| NutHumA       | nutrient humeral          |
| InfUlnCollatA | inferior ulnar collateral |
| RadA          | radial artery             |
| UlnA          | ulnar                     |
| AntUlnRecurrA | anterior ulnar recurrent  |
| AntRadRecurrA | anterior radial recurrent |
| CommInterossA | common interosseous       |
| PostInterossA | posterior interosseous    |

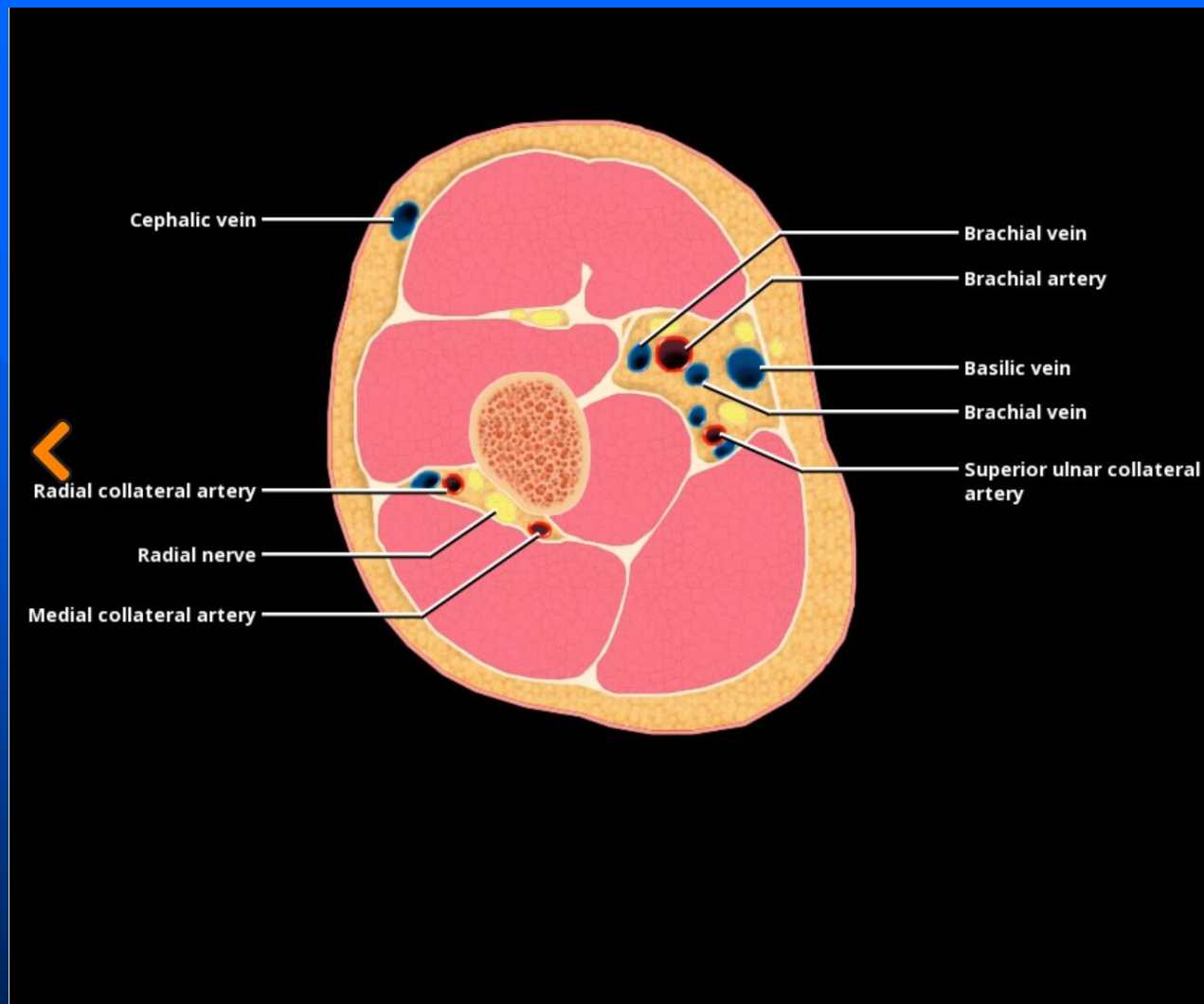






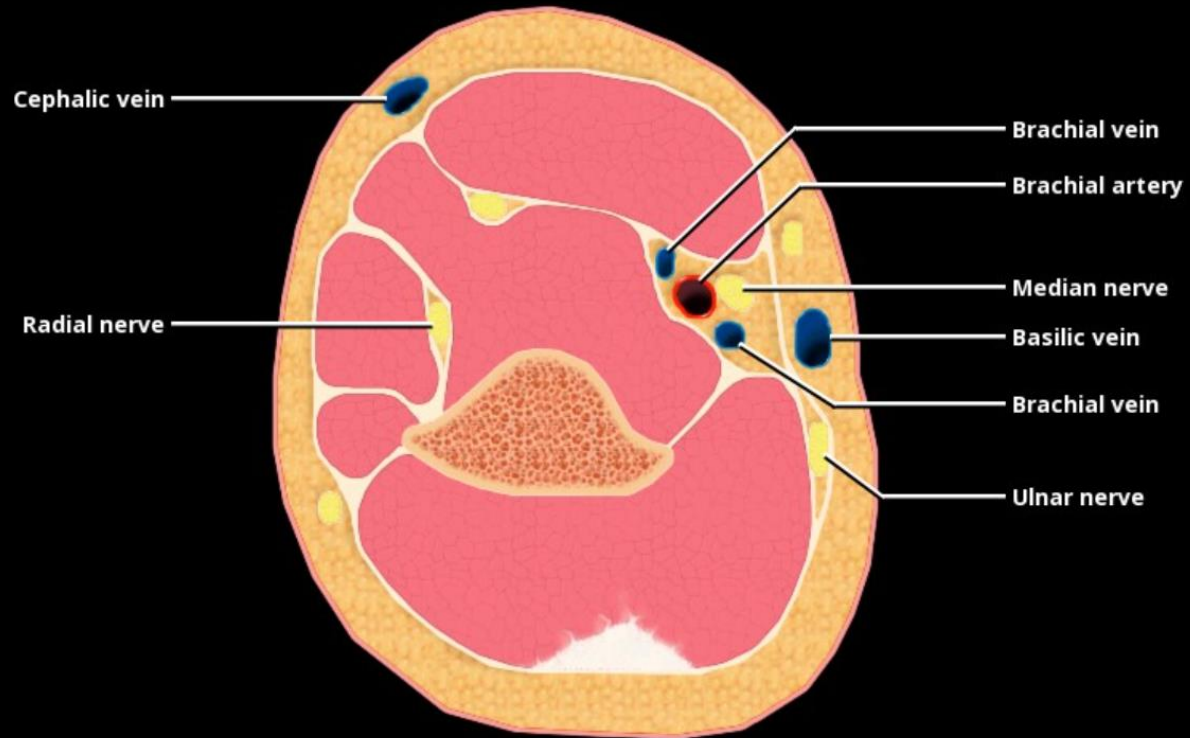
[View Full Screen Image](#)

Axial graphic shows the upper right arm. The brachial artery is a continuation of the axillary artery and accompanies the median nerve. The deep brachial artery (profunda brachii artery) is the main branch of brachial artery and accompanies the radial nerve. The basilic vein lies medially and the cephalic vein anterolaterally.



[View Full Screen Image](#)

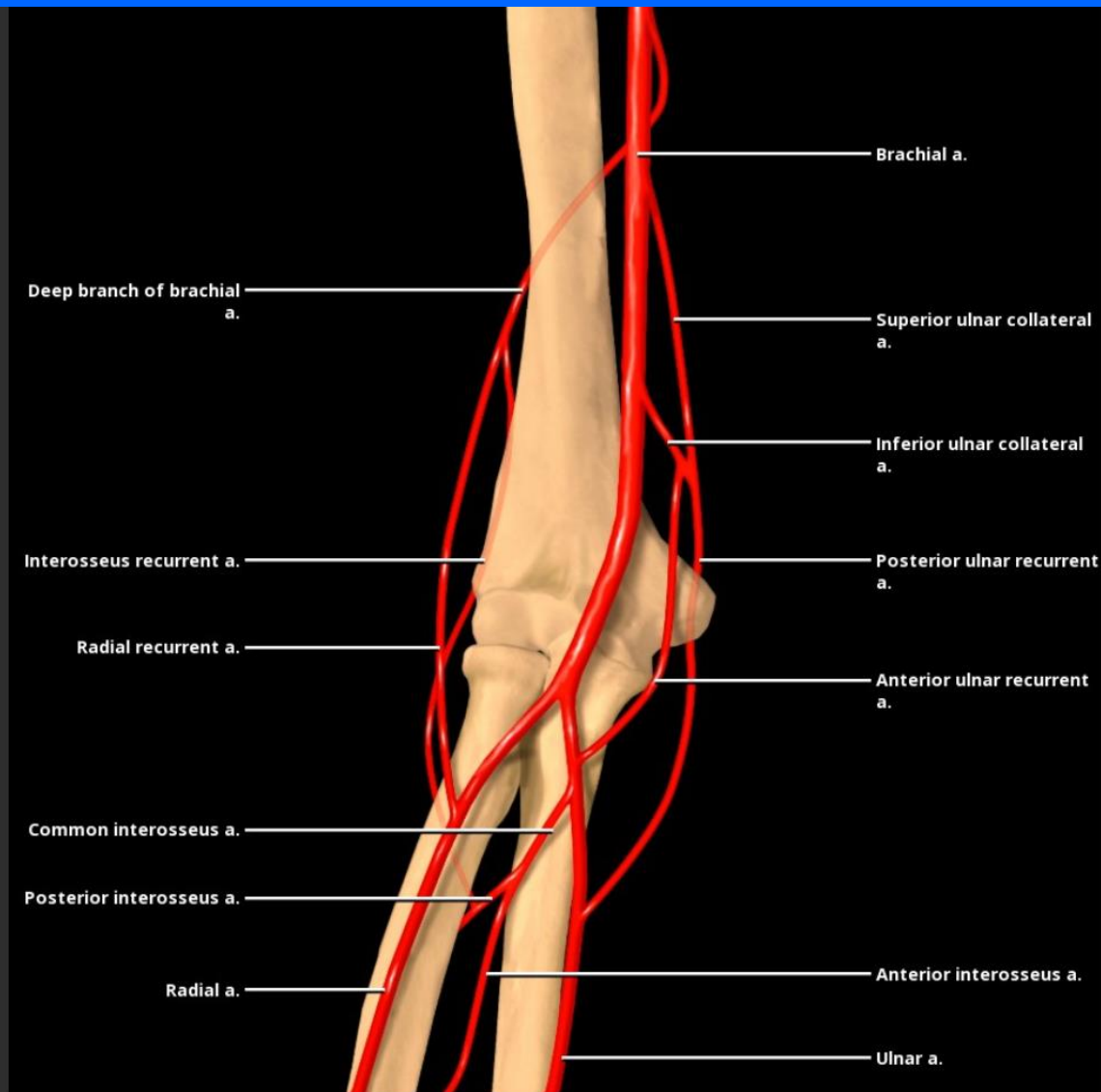
Axial graphic shows the right arm at the midhumeral level. Note that the profunda brachii artery accompanies the radial nerve and passes backward in spiral groove of humeral shaft before dividing into medial and radial collateral **arteries**. Superior ulnar collateral artery arises from the brachial artery and descends with the ulnar nerve.



[View Full Screen Image](#)

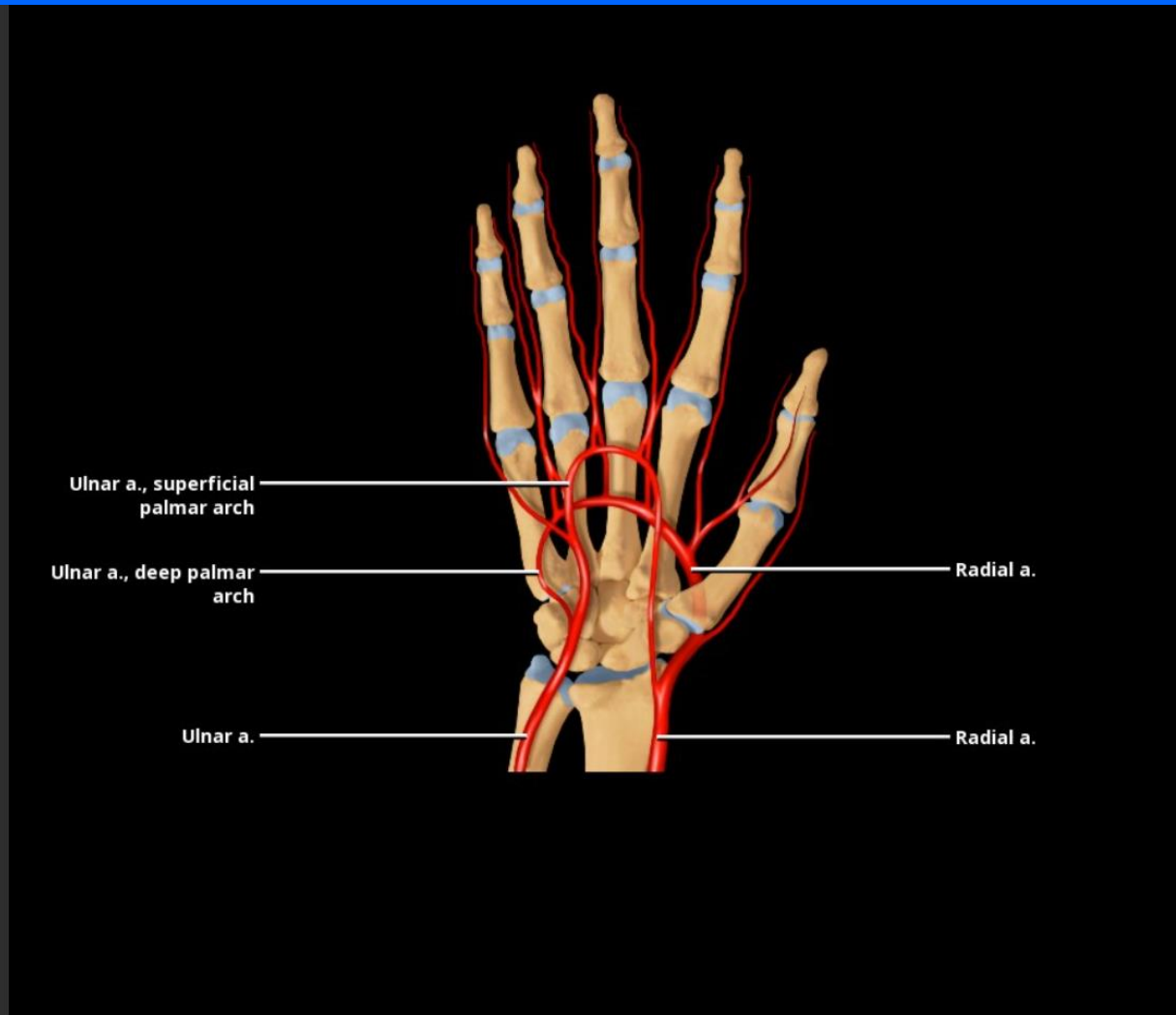
Axial graphic shows the right arm at the distal humeral level. Note how the median nerve is on the medial side of the brachial artery at this level.





[View Full Screen Image](#)

Graphic shows the brachial artery, which is the major artery of the arm. It divides into the radial and ulnar **arteries** in the proximal forearm.



[View Full Screen Image](#)

Graphic shows the distal aspect of the radial and ulnar **arteries** in the forearm and their terminal course in the wrist and hand to form the superficial and deep palmar arterial arches.